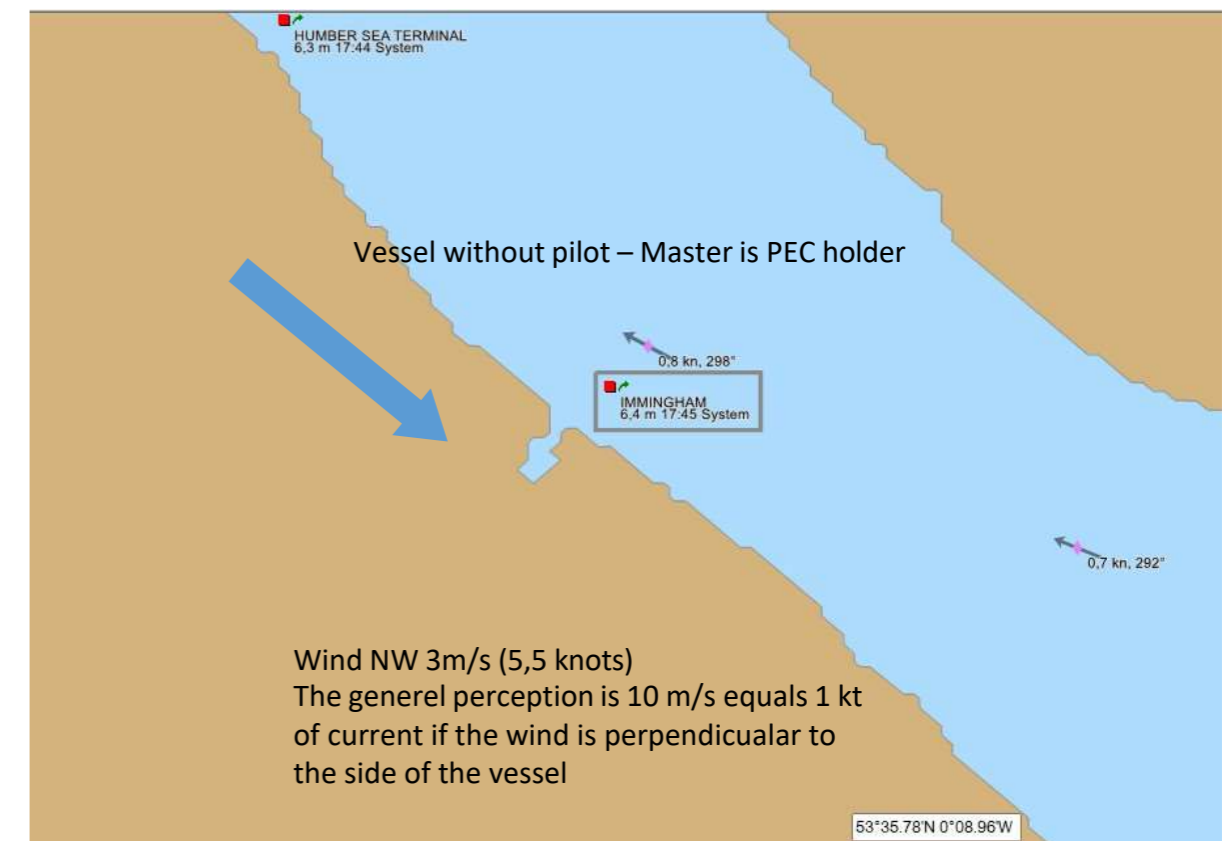
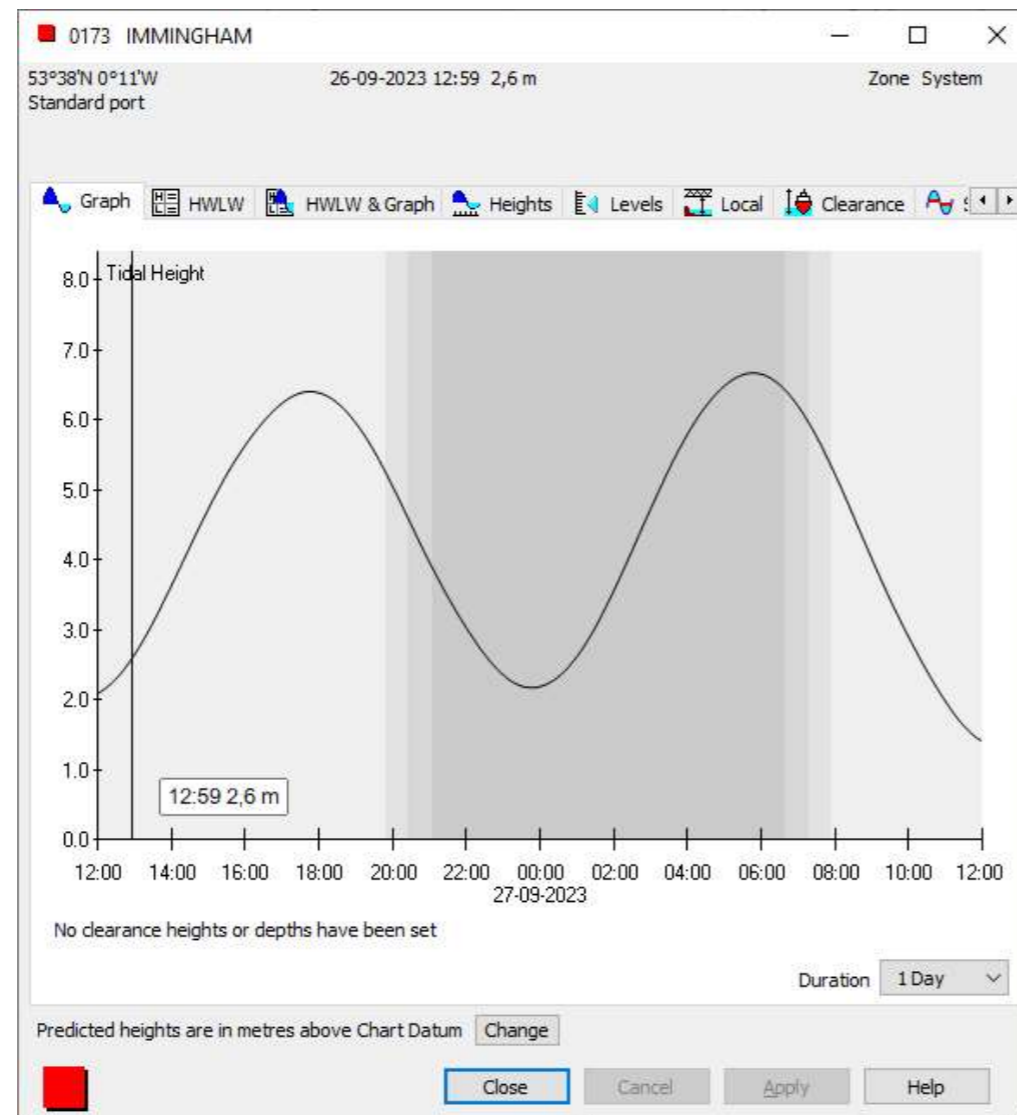
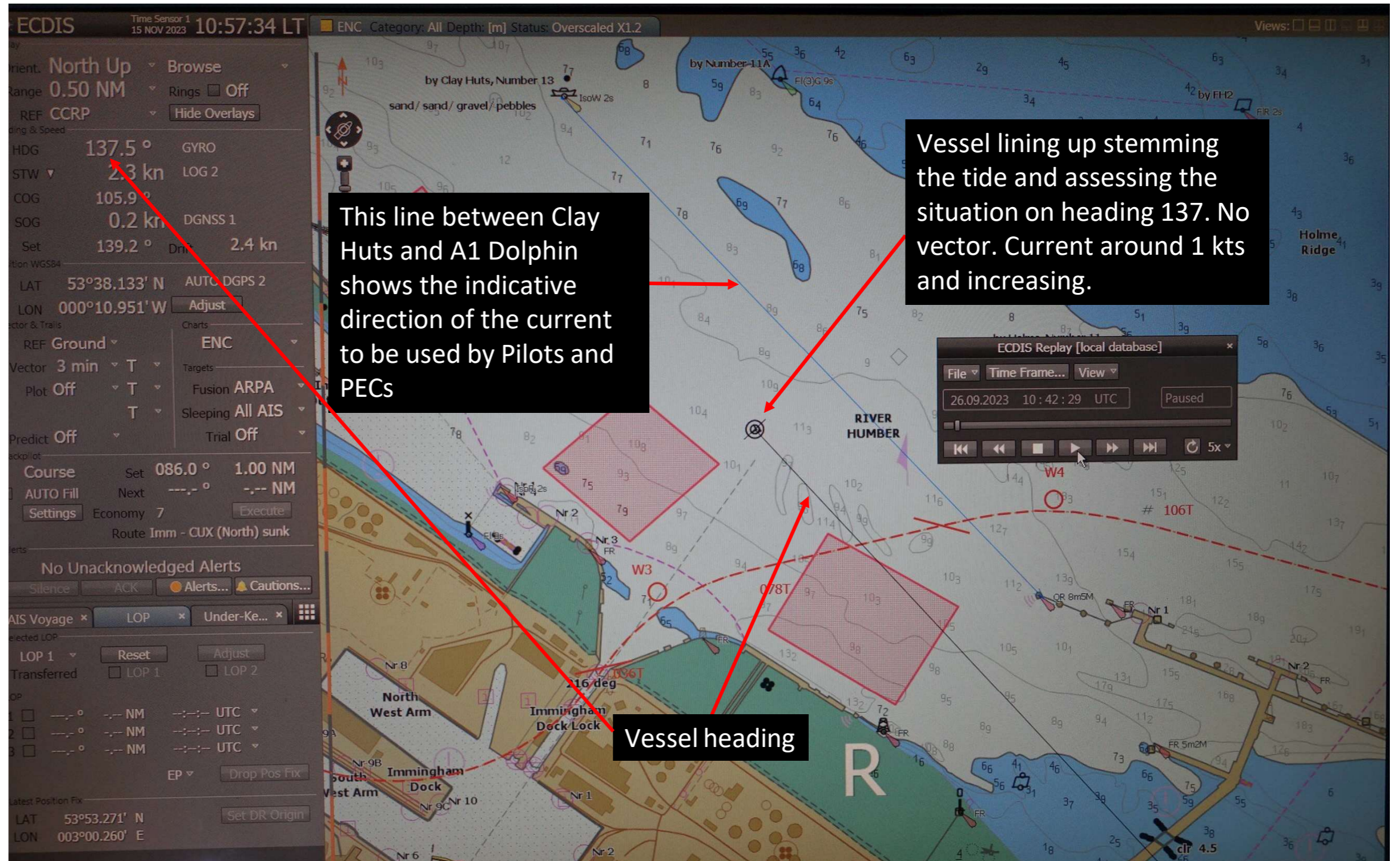


# Flood approach 26 09 2023

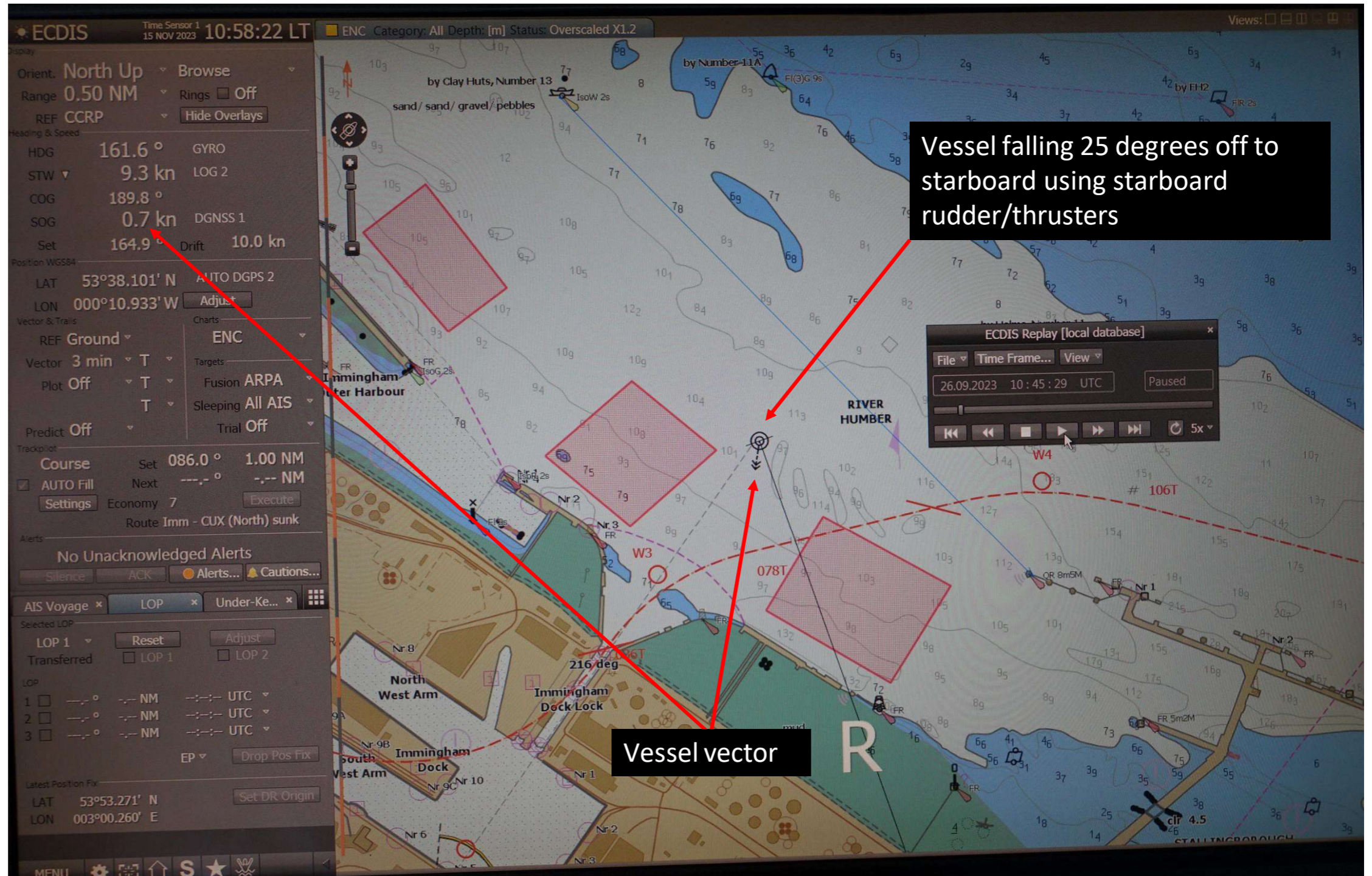


Vessel scheduled to berth on the 26/09 2023 1430 ST Immingham Inner Dock. Vessel lining up head to current, then gradually dropping off to starboard to glide towards the lock entrance, bow as close to Eastern Jetty as possible, ideally 20-30 meters. When the bow is out of or close to out off the current, hard starboard rudder and use split MEs to force the stern up into the current. Rudders can be split or kept synchron. Limits for when to take a tug rests with the Master taking current, windforce, wind direction and the prevailing depth and draught into consideration. 26th being 5 days before spring tide.

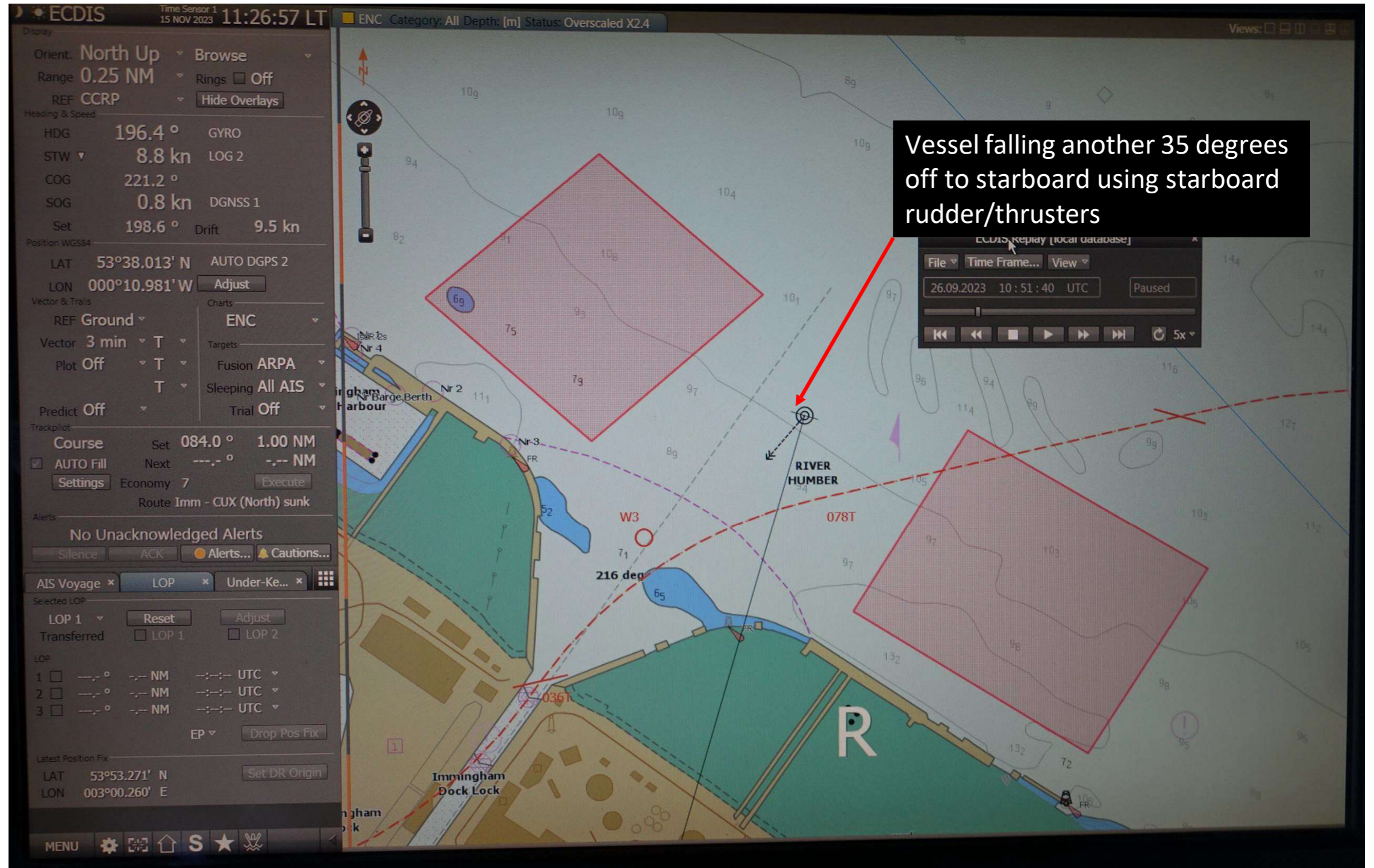












Vessel falling another 35 degrees off to starboard using starboard rudder/thrusters



